

# ICU Governance Review 2006

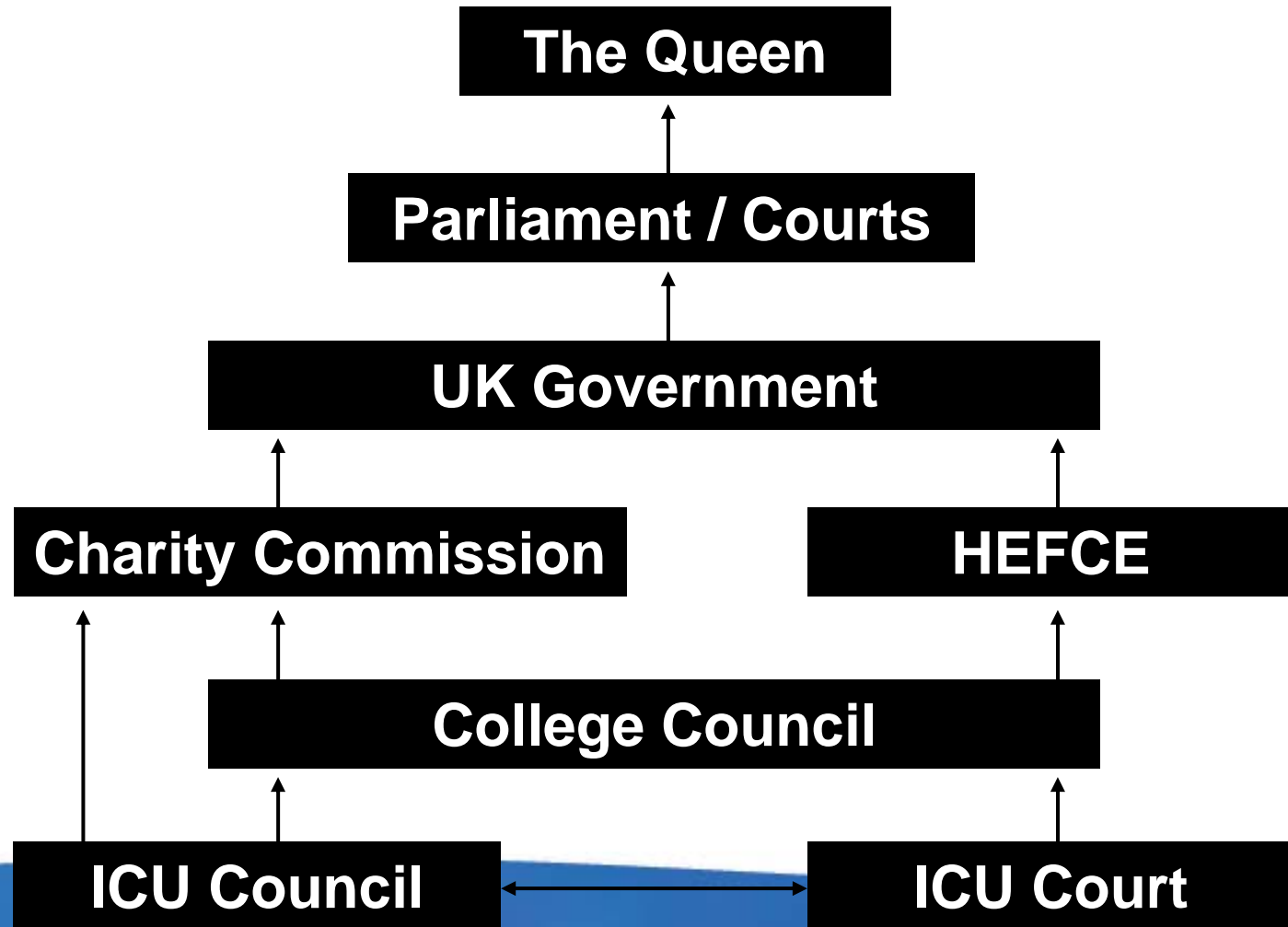
Phase III proposals

For consideration by Council on  
<insert date>

# Summary of phases

- Phase I
  - Establish the Court
  - Committee structure changes
  - Election reforms
  - Officer accountability reforms
  - Deregulation
  - Miscellaneous amendments
- Phase II
  - Council changes
- Phase III
  - Legal identity discussion

# What is above ICU Council?



# There are three options

1. College Department - Child
2. Unincorporated Association - Teenager
3. Incorporated Charitable Company - Adult



# College Department



- No legal identity
- Legal protection
- Retention of existing democratic structures
- Less autonomy?
- Avoid registration with Charity Commission?

# Unincorporated Association

- The “status quo”
- Legal status unclear
- No legal protection
- Registration with Charity Commission necessary
- Retention of democratic structures

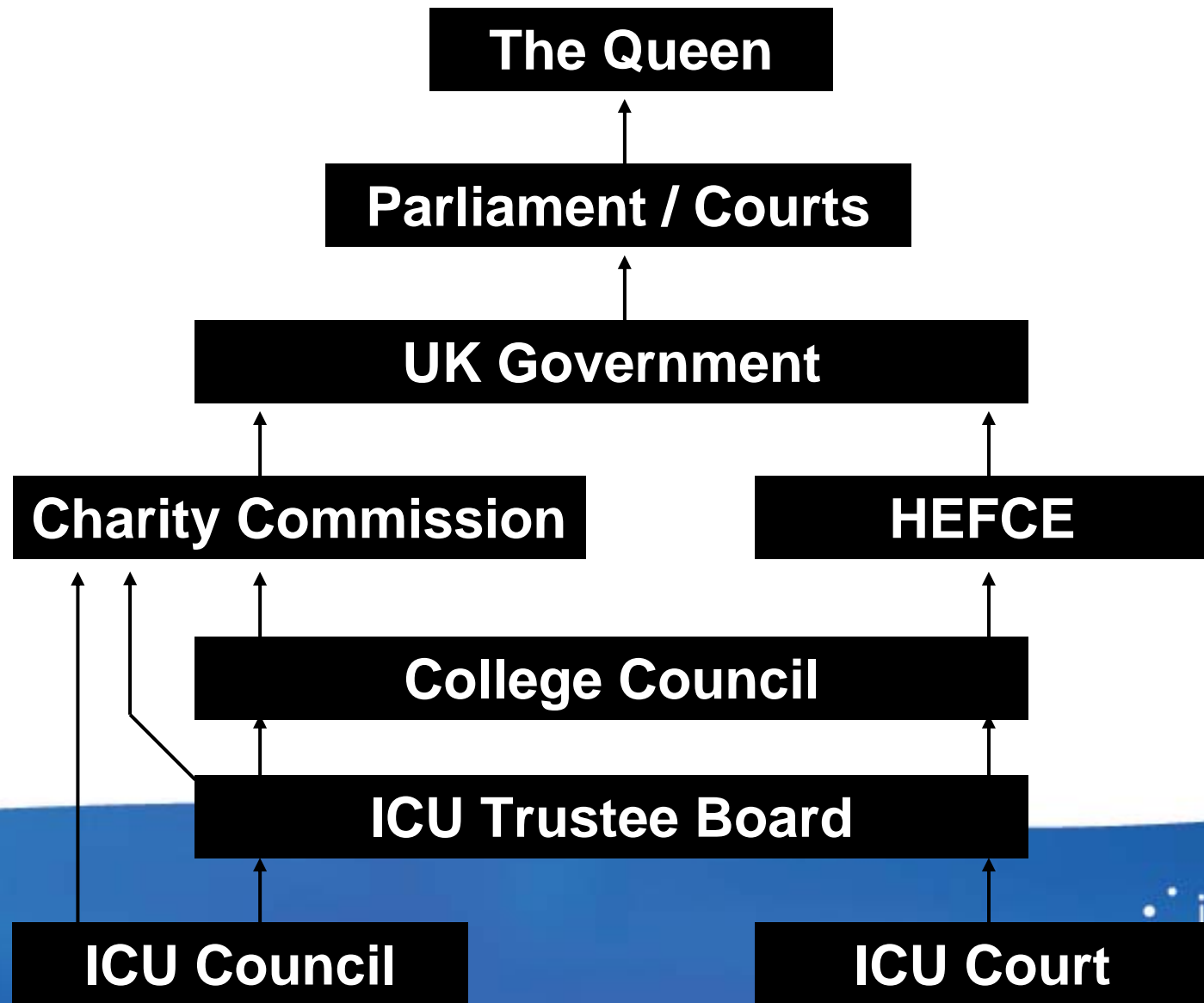


# Incorporated Charitable Company

- Legal independence
- Greater autonomy, more distant relationship with College
- Limited by guarantee, but more exposed to legal action than College department
- Registration with Charity Commission & Companies House necessary
- Trustee board necessary



# How would a Company work?



# Who would sit on the trustee board?

- According to company and charity law, paid trustees must form a **minority** of the board's membership
- Lay members would bring **expertise** in law, finance, H&S and higher education
- **College** would want strong representation
- There would be an **AGM**, which could dismiss members of the trustee board



President



DPCS



DPEW



DPFS



DPGS



College #1



College #2



FU President



CSC Chair



RWB Member



Lay member #1



Lay member #2












Lay member #3



Lay member #4

# Options appraisal

- As yet, no strong option has emerged and wider consultation is necessary...

	College Dept. (Child)	Unincorp. Assoc. (Teenager)	Incorp. Charitable Company (Adult)
Charity Commission regulation avoidable			
Legal protection guaranteed			
Legal Independence and autonomy			
Democratic structures retained	